



# Data Collection 101

June 24, 2020  
v1.0

This document is intended for informational purposes only. The information contained herein is confidential and privileged and may not be shared with any third party without the prior written consent of FIGmd, Inc.

## Notice of Copyright, Confidentiality and Disclaimer

**Copyright © 2021 FIGMD, Inc. All Rights Reserved.**

FIGMD, Inc. ("FIGmd"), hereby states that the contents of this document are proprietary and Confidential to FIGmd and that this document is governed by the copyright laws of the United States of America and other countries. It may not be reproduced, distributed, saved, stored or altered, in whole or in part, using any means, process or apparatus without the expressed written consent of FIGmd.

All trademarks, logos, graphics and other material included in this document are the property of their respective owners.

### Disclaimer

FIGmd provides all material and information in this document on an "as-is" basis and disclaims all warranties and conditions with regard to this information, including all implied warranties and conditions of merchantability, fitness for any particular purpose, title and non-infringement. The document and its contents are subject to change without notice and, as such, do not imply responsibility on the part of FIGmd for any inaccuracy contained herein. In no event and under no circumstances can FIGmd accept responsibility for errors or omissions or be held liable for any kind of damage resulting from the use, performance, connection with or the application of the information contained in this document.

### Environment

FIGmd is committed to the conservation of natural resources and reducing its overall burden on the environment. Please consider the environment before printing this document.

- Introduction
- Terminology
- Data collection
  - methods & overview
  - hosting
- Data review
- What data is collected?
- FAQ's
- Roles & Responsibilities

This document is intended to provide a general overview and introduction about data collection methods that FIGmd uses by integrating practice systems to collect the required data for measure calculations. FIGmd can collect data from various EHR's (Electronic Health Record), Practice Management (PM), RCM (Revenue Cycle Management) and Laboratory Information System (LIS).

**EHR/EMR** - All the clinical data is collected from these systems via various mechanisms

**PM/RCM** - In case the CPT codes or encounter codes are not available in EHR, then it is collected from the PM/RCM (Billing systems). There are some practices where even clinical data is also collected from RCM

**FEC** - FIGmd Enterprise Connector, which is installed on the practice or vendor database server in case of PULL integration

**CDR (Clinical Data Repository)** - Normalized data for all practices across accounts in the FIGmd GCP environment. While data structure of various EHR/PM/RCM/LIS system would be different but CDR will have standard structure to acquire data in a normalized form.

**DM (Data Mart)** - Transformed data at the element level as per the Registry Data Dictionary for the measure.

**Registry Pegasus dashboard** - The Registry specific dashboard that displays measures performance.

**CAS (Client Account Support)** - FIGmd support team responsible for reviewing Registry dashboard with sites.

**GCP (Google Cloud Platform)** - Platform used to host the Registry data.

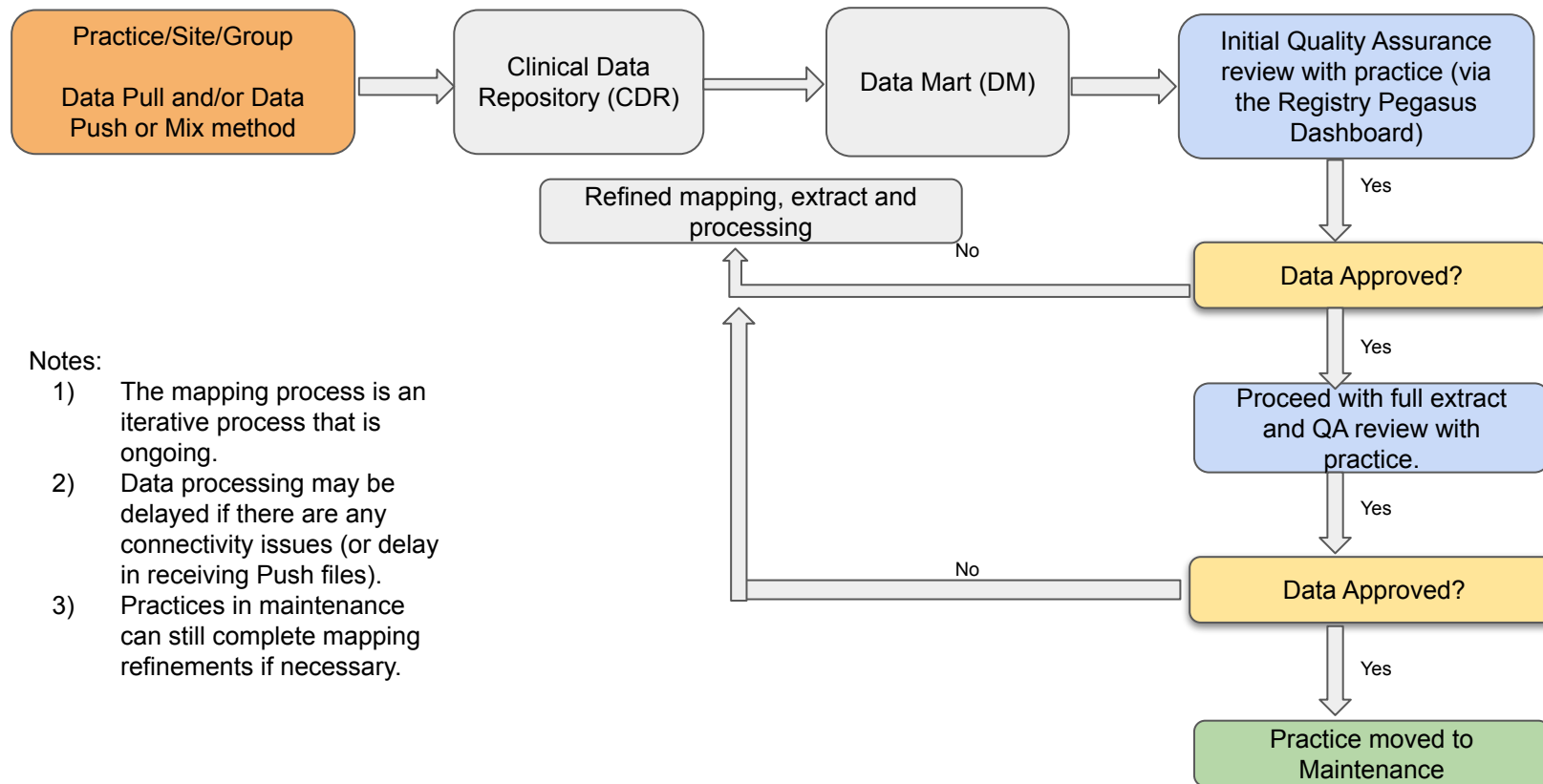
**Data Pull** - automated method for data extraction via the FIGmd Enterprise Connector (FEC), previously known as Registry Practice Connector (FEC).

**Data Push** - SFTP/FTP process for transferring files from the practice/site/group to FIGmd. Various file formats are supported (e.g. CCDA, HL7, CSV, QRDA1).

**Mix (Pull + Push)** - a combination of Pull and Push to gather the required data for Registry measures processing. Data coming from multiple sources for the practice

## Hosting:

Hosting type	Description
Site hosted or locally hosted	the site has access to and manages the server in house where data is hosted.
Cloud or Vendor hosted	the data is hosted in the cloud by either the EHR vendor or a 3rd party vendor. Practice does not have access to or does not manage the server where the data is hosted.



## Notes:

- 1) The mapping process is an iterative process that is ongoing.
- 2) Data processing may be delayed if there are any connectivity issues (or delay in receiving Push files).
- 3) Practices in maintenance can still complete mapping refinements if necessary.

# What type of data is collected?

## From EHR/LIS

### Structured data (discrete fields)

- Vitals
- Diagnosis codes
- Procedure codes
- Medications

### Unstructured data (notes)

- Notes & plan section

## From PM/RCM

### Structured data (discrete fields)

- Encounter data
- CPT codes

***\* The list of data points mentioned above is not an exhaustive list of all the information that is gathered, but just some examples of they type of information that is being gathered.***



Q1: If a FEC is installed at my practice, how frequently is the Data Pulled?

A1: Data pulled (extracted) on a nightly basis between 12 am - 7:30 am (site local time) or as per the approved time interval.

Q2: Does the FEC interfere with any other applications on the server?

A2: No

Q3: What are the basic requirements to install the FEC?

A3:

- Microsoft Windows Operating System with Microsoft .NET Framework 4.0 installed, server
- Server: Windows 2008 or above.
- Desktop: Windows 7 or above
- 2.4 GHz with 2 vCPU
- 8 GB memory available during scheduled data extraction and upload.
- 10 GB of hard drive space available.
- Broadband Internet access.

Q4: Is there additional information that I can give to my IT team?

A4: For additional information please refer to the FIGmd Enterprise Connector (FEC) FAQ's and Registry\_Data Pull document.

## Data Push

Q1: How frequently do we have to send the data?

A1: Recommend that the data is sent every week or every 2 weeks.

Q2: What if we want to send the data in a file format that is not mentioned in the Terminology slide?

A2: Additional file formats will need to be reviewed and discussed with FIGmd.

Q3: Is there additional information that I can give to my IT team?

A3: For additional information please refer to the Registry\_Data Push document.

# Roles & Responsibilities

Milestone	Key Activities	FIGmd	Registry	Site
FEC install (Pull)	Initiate FEC installation with the help of Practice or Vendor IT contact	L1 support	N/A	IT team
Push (creating & sending file)	Gap analysis, PUSH File configuration for Parser	L1 support, CAS, Mapping team	If required coordination with Site and/or EHR vendor	IT & Site admin
Data processing	CDR->DM->Dashboard	Mapping team	N/A	N/A
Dashboard review	Review measure performance with the Practice clinical contacts and seek for feedback	CAS	If required	Site admin and/or Clinical lead
MIPS	MIPS submission	CAS	Registry staff	Site admin and/or Clinical lead

Date	Version history	Document Owner	Summary	Reviewed by	Approved by
June 24, 2020	1.0	FIGmd	Initial release	Siddhi Baralay	Narendra Shaligram



# Thank you

This document is intended for informational purposes only. The information contained herein is confidential and privileged and may not be shared with any third party without the prior written consent of FIGmd, Inc.