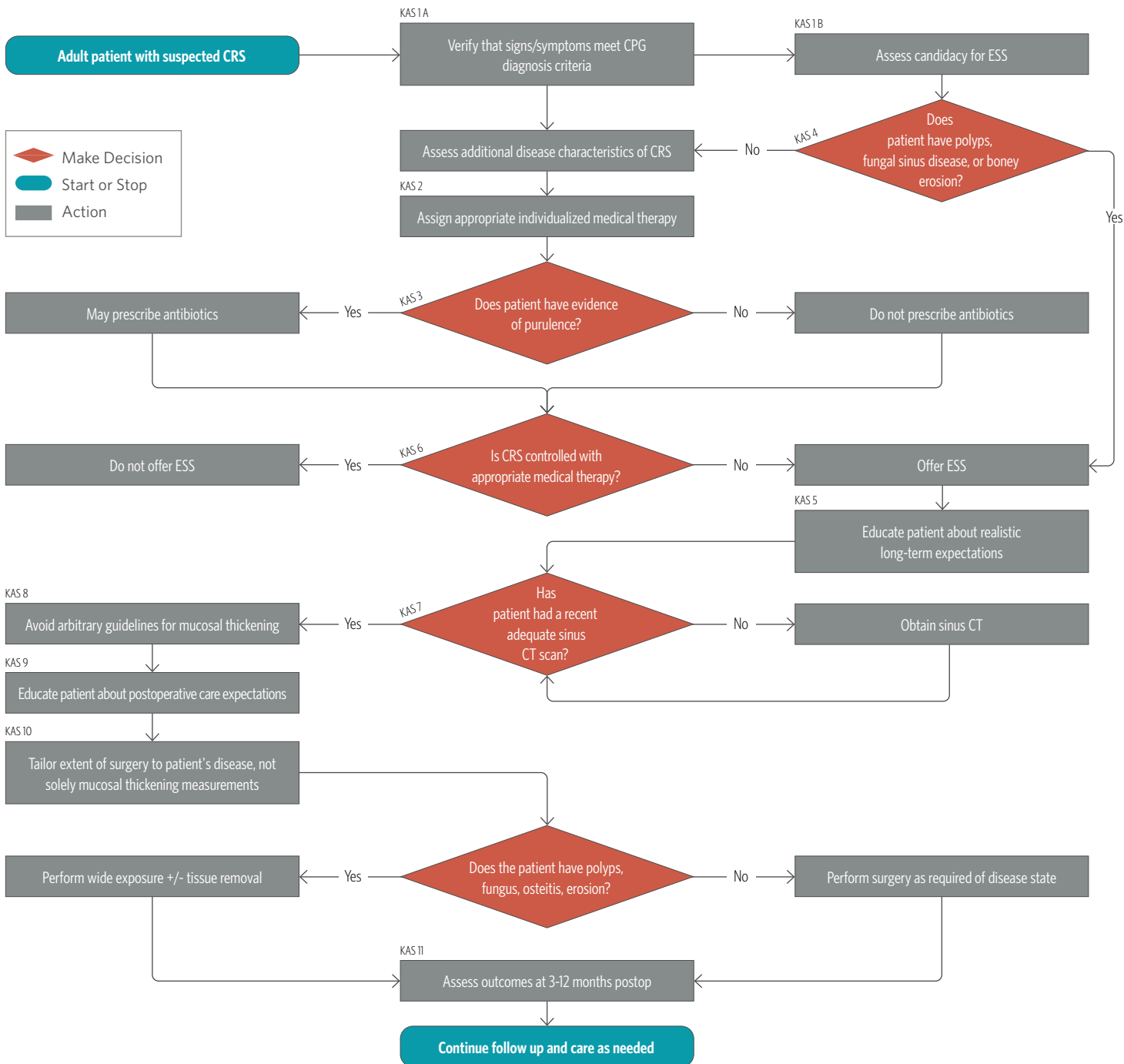


CPG - Clinical Practice Guideline | KAS - Key Action Statement | CRS - Chronic Rhinosinusitis | ESS - Endoscopic Sinus Surgery | CT - Computed Tomography | Postop - Post operative



Shin, J.J., et al. (2025), Clinical Practice Guideline: Surgical Management of Chronic Rhinosinusitis. *Otolaryngol Head Neck Surg*, 172: S1-S47. <https://doi.org/10.1002/ohn.1287>