

## Reg-ent MIPS Submission and DRCF Webinar

December 15, 2017  
12:00 – 1:00 PM ET

Thank you for joining today's  
Reg-ent webinar  
**MIPS Submission and DRCF**

The webinar will begin promptly at 12 pm ET.

We ask that all participants please keep their  
phone lines muted.

- Welcome
- Introduction of Reg-ent Team and Today's Speakers

## AAO-HNSF

- Cathlin Bowman, MBA
  - Director, Reg-ent
- Laura McQueen, RN MSN
  - Senior Manager, Reg-ent
- Taskin Monjur
  - Program Manager, Reg-ent

## FIGmd

- Siddhi Baralay
  - COO, FIGmd
- Ankita Mishra
  - Project Coordinator, Reg-ent
- Radhika Surywanshi
  - Product Team, FIGmd
- Hemant Tikekar
  - Engagement Lead, FIGmd

- Opening Remarks
  - Cathlin Bowman
  
- Reg-ent MIPS Reporting Overview
  - Laura McQueen & Taskin Monjur
  
- Demonstration – Completing MIPS Submission and DRCF via Reg-ent
  - Ankita Mishra
  
- Open Question & Answer Session
  - All
  
- Closing Remarks
  - Cathlin Bowman
  
- Conclusion of Webinar

- Review the features and functionality of the Reg-ent MIPS Dashboard, with particular focus on the following:
  - MIPS eligibility confirmation and screening for applicable exclusions
  - Summary dashboard
  - Data Release Consent Form (DRCF) completion
  - Submission completion
- Increase knowledge and understanding of how to use the Reg-ent Dashboard to report MIPS 2017, including:
  - Review of performance data
  - Selection of data and reporting periods
  - Review of selections and estimated MIPS scores
  - Completion of DRCF
  - Completion of submission process
- Illuminate the Reg-ent MIPS 2017 reporting process and timeline.
- Address attendee questions regarding completing the submission process via Reg-ent, including the completion of the DRCF.

# Reg-ent MIPS Reporting Overview

- Reporting process and timeline
- Using the Reg-ent MIPS Dashboard
- Data Release Consent Forms

- Quality Performance Data
  - EHR data integration
  - Web entry tool
    - Manual entry
    - Utilize a CSV file to streamline data upload
  
- Advancing Care Information (ACI)
  - For practices with EHRs
  - Enter data and attest
  
- Improvement Activities (IA)
  - Enter data and attest

# MIPS Reporting Timeline

## December 2017 – March 2018

- Receive access to the Reg-ent MIPS Dashboard / Web Entry Tool
  - Confirm MIPS eligibility for each clinician
  - Complete exclusion screening questions
  - Review Tax ID and NPI numbers for accuracy
- Determine reporting timeframe: Test, Partial, Full
- Decide if reporting as a group or as an individual
  - No GPRO enrollment with CMS required
- Select Quality measures
  - Review Quality Dashboard, complete mapping refinement
  - Enter or upload patient data in the MIPS web entry tool, review Quality Dashboard



# MIPS Reporting Timeline

## December 2017 – March 2018

- Complete data entry and attestations for:
  - Advancing Care Information (ACI)
  - Improvement Activities (IA)
- Complete submission to Reg-ent
  - Complete Data Release Consent Form (DRCF)
  - Finalize selections of data and time period
  - Review estimated score
  - Click Submit
- FIGmd reviews submission and then submits to CMS
  - Email with confirmation of submission

- December 2017
  - 31<sup>st</sup> - End of 2017 reporting period
  - 31<sup>st</sup> - Deadline to use web entry tool for Quality category
- January 2018
  - 2<sup>nd</sup> - Submission period starts
- February 2018
  - 1<sup>st</sup> - Deadline to complete data mapping/move to maintenance status
  - 17<sup>th</sup> - Deadline to completed data entry and measures selection
  - 17<sup>th</sup> - Completed DRCFs due
- March 2018
  - 12<sup>th</sup> - Submissions to Reg-ent due – *no exceptions*
  - 31<sup>st</sup> - Submission period ends

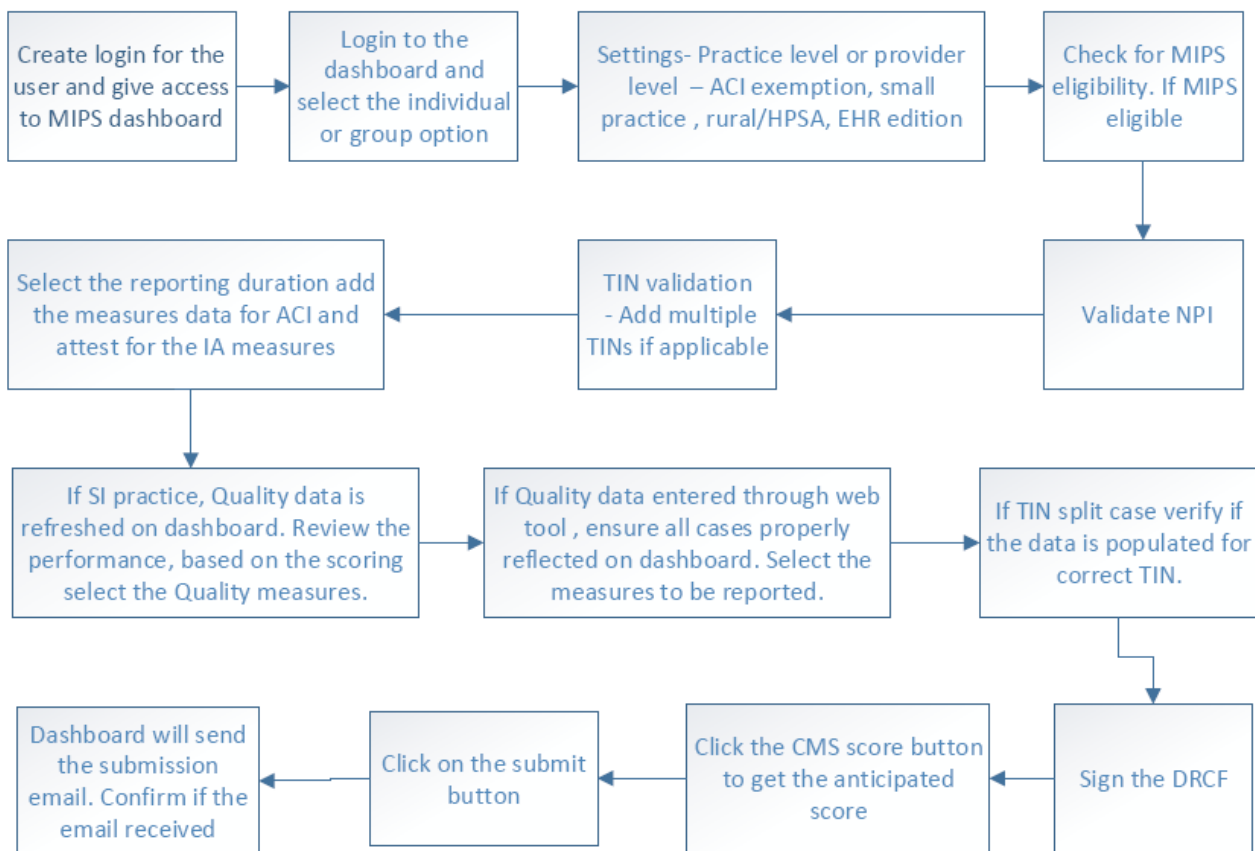
- What is a DRCF? Why is it needed?
  - DRCF = Data Release Consent Form
  - Required per CMS for any entity to report on your behalf
  - Provides your approval to allow the Reg-ent registry to submit your MIPS data to CMS on your behalf
  - Outlines responsibilities as dictated by CMS of the practice and of the registry surrounding submission of performance data
- Who can sign the DRCF?
  - Individual reporting – Eligible Clinician or authorized individual to sign on behalf of the EC
  - Group reporting – Individual authorized to sign on behalf of the Eligible Group
- It must be signed before data can be submitted on your behalf

- How this year's submission is different from last year...
  - Online submission to CMS; get score immediately
  - Multiple submissions allowed
  - Practices need not enroll as GPRO; CMS will pull it from claims

# Demonstration of the Reg-ent MIPS Dashboard

## Submission and DRCF Completion

## MIPS submission workflow



## Questions & Answers

- Please use the chat function to send your questions.
- Please include your Reg-ent practice ID.

- Thank you
- Additional resources
  - User Guides
  - [www.reg-ent.org](http://www.reg-ent.org)
  - [www.qpp.cms.gov](http://www.qpp.cms.gov)
  - *Reg-ent Report e-newsletter*
  - Other Reg-ent communications
- Contact information
  - [Reg-ent@entnet.org](mailto:Reg-ent@entnet.org)
  - [aaohnscams@figmd.com](mailto:aaohnscams@figmd.com)
  - *Please remember to include your practice ID in the subject line and include both email addresses listed above.*





Reg-ent<sup>SM</sup>  
ENT CLINICAL DATA REGISTRY